

# WELCOME

**New 6th Grade  
Families To Boca  
Raton Community  
Middle School**



An official AICE/CAMBRIDGE INTERNATIONAL SCHOOL

# Agenda:

- ▶ Welcome message from Principal Lee
- ▶ Introductions from us!
- ▶ About Middle School Culture and Rules
- ▶ About Academics
  - ▶ Gifted/Pre-AICE/Cambridge Courses
  - ▶ Course Pathways
  - ▶ Electives
- ▶ Dates & information to remember
  - ▶ Pre Med Students (stay for updates)

# Introductions to 6th Grade Team

- ★ Mrs. Joyce Pribell, Assistant Principal
- ★ Mr. Howard Rudnick, Guidance Counselor
- ★ Mrs. Joana Benjamin, Dean/Testing Coordinator
- ★ Ms. Amy Finneran, Pre-Med Choice Coordinator

## ★ What's in your folder?

- ★ Important Informational Brochure/agenda
- ★ Building Map
- ★ Bell Schedule
- ★ Standard Operating Procedure
- ★ School cash online information
- ★ Important Dates
- ★ District Calendar



Cambridge Assessment  
International Education

# ABOUT US



- ▶ **We are: “An official Cambridge International School”**
- ▶ We are a **comprehensive** middle school - about 1000 kids/300-400 on each grade level, with all of the supports kids need to be successful
- ▶ We have a WIDE array of academic programs: **Choice programs; Gifted/Cambridge; High School coursework; Exceptional Education Programs**
- ▶ We have the **ONLY 3D Virtual Reality Computer Lab** in the District.
- ▶ We have a WIDE array of **Electives**
- ▶ We have a WIDE array of "award winning" **Athletics**
- ▶ We have a WIDE array of "award winning" **Clubs/Organizations**
- ▶ **We have an amazing PTSA that has many ways for you to volunteer!**

# BOCA MIDDLE PTSA

**LOOKING FOR  
PRESIDENT/OFFICERS  
FOR NEXT YEAR**

What does PTSA do for Boca Middle?  
Please JOIN so you can volunteer at any  
one of these events!

- Our only Vendor for School Shirt Sales
- Conducts fundraisers when needed
- Lunchtime “Real Dollar Store” (volunteers on Wednesdays)
- Funds/helps with 3 Honor Roll Celebrations in the year (volunteers)
- Plans Annual PTSA “Boca Bash” at school ‘carnival’ of fun activities in February (volunteers)
- Funds/plans 8th grade Dance Celebration (volunteers)
- Sponsors students in need
- Funds/Contributes to budget for teacher incentives and Teacher Appreciation Week! (volunteers)

JOIN PTSA

Website:

<https://brcms.givebacks.com/>

# About our Culture and School Rules



What does **R.E.A.L.** MEAN?

*Cobras keep it R.E.A.L. because we know this is the code we follow:*

**R = Respectful** *(at all times)*

**E = Empathetic** *(to everyone)*

**A = Accountable** *(for our actions)*

**L = Learners** *(the goal)*

# School Culture : Our Behavior Matrix

## BRCMS students keep it R.E.A.L.



### COBRAS GET R.E.A.L.



#### Student Expectations

UNIVERSAL GUIDELINES	COURTYARD BUS LOOP CAR LINE	CLASSROOM	HALLWAYS	CAFETERIA	RESTROOMS	BUS
<b>RESPECTFUL</b>	Honor authority Keep hands, feet, and objects to self	Follow class rules and expectations	Keep traffic moving  Honor authority  Keep hands, feet, and objects to self	Adhere to line etiquette  Leave area clean  Speak in an indoor voice	Maintain a sanitary environment	Keep hands, feet, and objects to self  Honor authority
<b>EMPATHETIC</b>	Be courteous and tolerant of others  Seek an adult for help, if needed	Let everybody have a voice  Allow others to achieve their learning goals	Be tolerant of accidental bumping  Speak at a low volume	Use table manners  Say "please" and "thank you" to café staff	Respect the privacy of others  Report damage and unclean areas to an adult	Use appropriate language and volume  Greet your bus driver
<b>ACCOUNTABLE</b>	Be responsible for your own actions  Keep grounds clean.  Respect school property	Do your own work  Attend daily  Have all of your materials	Be aware of time  Walk with a purpose  Use your signed agenda as a hall pass	Follow all lunch area expectations  Use the restroom  Finish food before you leave	Go, flush, wash, leave	Stay in your seat  Follow bus rules  Keep hands, feet, and objects inside the bus
<b>LEARNER</b>	Walk to class when the bell rings  Leave campus promptly when dismissed	Turn in all assignments on time  Use agenda	Get to class on time  Plan your day to get materials from locker	Clean up after yourself  Encourage others to clean up  Get to class on time	Use time wisely  Use restroom between classes or have a signed agenda	Arrive at your bus stop on time  Check the bus board or ask an adult for help  Know that rules apply while waiting at bus stop

# SWPBS Dress Code - Dress for success Fashion Runway! (think **solids** top to bottom)

## SHIRTS

- Any **SOLID** color polo style shirt with button-up neck; with collar; with sleeves; and worn as the outermost garment.
- Any BRCMS/PTSA sponsored Cobra and Anti-Bullying t-shirts may be worn but cannot be altered in any way.

## BOTTOMS

- **SOLID** color cotton, poly-blend or twill, khaki-like, pants, shorts, or jeans are to be worn with no holes.
- Must be fitted, tailored, hemmed, and of conservative fit. Belts worn if necessary. Worn at waist.
- **NO LEGGINGS, JEGGINGS, KNITS, YOGA/SPANDEX PANTS, ATHLETIC SHORTS, OR TIGHTS ARE ALLOWED ; NO CAMOUFLAGE (SOLID COLORS ONLY)**

## SHORTS

- Any **SOLID** COLOR. **NO KNITS, CAMOUFLAGE, SPANDEX, OR GYM SHORTS.**
- Tailored, hemmed, fingertip length. & Fitted and worn at the waist.
- **No Skirts**





# Dress Code

## SHOES :

- Loafers, sneakers, and flat shoes must be worn. ALL shoes must be completely enclosed and flat.
- **No crocks, boots, high heels, flip flops or slides of any type are permitted for safety reasons.**

## SWEATSHIRTS & SWEATERS

- **SOLID COLORS** only.
- Logo no greater than **2" diameter**.
- Must be worn **over a polo/golf-style shirt**. Collar must be out and visible.
- **NO HOODIES, NO HOODIES, NO HOODIES**



## ACCESSORIES

- **IDs are MANDATORY & NEVER DEFACED nor COVERED**
- Sunglasses that are prescription **ONLY**.
- **No hats, hoods, bandanas or sweatbands.**
- **No PHONES**, Headphones and ear buds should not be worn or visible and stowed away at all times.

# Dress Code Examples

**WEAR THIS :)**



**NOT THAT**

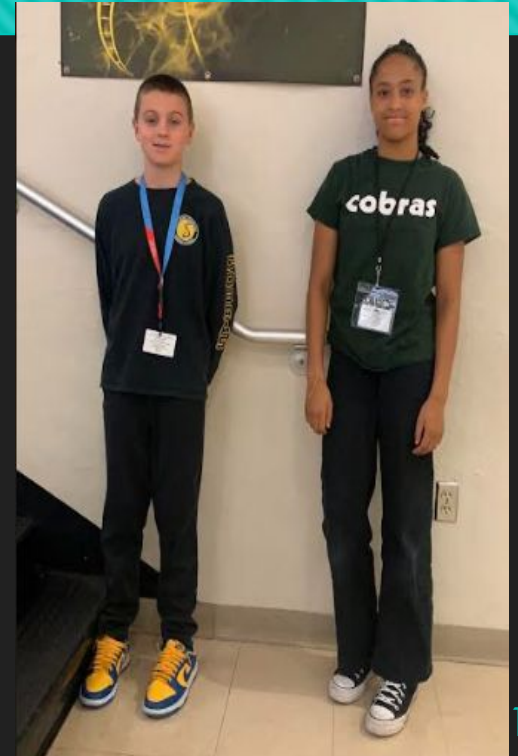


**NOT THAT**





# THIS IS HOW WE DRESS FOR SUCCESS



# A day in the life of a 6th grader - from pick up to drop off...

## COBRA ARRIVAL & DISMISSAL

### ALL STUDENTS ENTER via BUS LOOP Into COURTYARD

- WALKERS/BIKERS (no skateboards)
- BUS RIDERS
- CAR RIDERS-Parent drop off front of school (yes the car line is **long**, please follow staff directions to pull your cars up to reduce your wait time)

**ALL STUDENTS MAY GO TO THE CAFETERIA FOR BREAKFAST AND THEN DIRECTLY TO THE GYMNASIUM. ALL 6TH GRADERS ARE DISMISSED TO PERIOD 1 FROM THE GYMNASIUM**

# A day in the life of a 6th grader -from pick up to drop off...

6 <sup>th</sup> Grade	
Period 1	9:30-10:30
Period 2	55 min 10:34-11:29
Lunch 1	31 min 11:33-12:04
Period 3	55 min 12:08-1:03
Period 4	55 min 1:07-2:02
Period 5	55 min 2:06-3:01
Period 6	60 min 3:05-4:05

# About our Academics

## CORE SUBJECTS

- **ELA**
- **MATHEMATICS**
- **SCIENCE**
- **HISTORY/SOCIAL STUDIES**

## ELECTIVES

- ▶ **BAND, 1, 2, and 3**
- ▶ **CULINARY**
- ▶ **ART**
- ▶ **PE**
- ▶ **Pre Medical Electives**
- ▶ **Computers/IT**
- ▶ **Spanish**
  - ▶ **Limited:**
    - ▶ **News Crew/Journalism**
    - ▶ **SGA**
    - ▶ **Photography/yearbook**
    - ▶ **Other Pre-Aice Electives**

# What is Pre-AICE/Cambridge?



Cambridge Assessment  
International Education

Cambridge teaching strategies develop 5 top 21st Century skills while educating students in core content.

- ▶ Confidence
- ▶ Responsibility
- ▶ Reflection
- ▶ Innovation
- ▶ Engagement

- ▶ Teachers are trained to teach our gifted students in this program and beyond
- ▶ Pre-AICE courses in Middle School prepare students for AICE courses in high school



# WHY Cambridge?



Cambridge Assessment  
International Education

Boca Middle = Success in high school  
AICE Courses

- ▶ In High School: Get Course Weighting (HPA)
  - ▶ Gain college credits
  - ▶ Pass 7 specific AICE assessments to lead to an AICE Diploma/**Bright Futures scholarship**



## WOW! DID YOU KNOW?

Boca Raton High School has 225 seniors graduating with an Cambridge/AICE Diploma this year (Bright Futures Scholarship!) Of the 225 students, **115 attended Boca Raton Middle.**

For the last 4 years, Boca Raton Middle has been an official "Cambridge School" and **now** has over 600 students taking "Pre-Aice" course(s) in order to prepare for The AICE Diploma at Boca Raton High School, or any other High School they attend.

# Pre-AICE/Cambridge Courses Offered at Boca Raton Middle



Cambridge Assessment  
International Education

- ▶ Pre-AICE (Lower Secondary) Cambridge English Language Arts (Grades 6, 7, 8)
- ▶ Pre-AICE pre-Algebra (8th Grade)
- ▶ Pre-AICE Photo (HS course)\*
- ▶ Pre-AICE Spanish 1 for Spanish speakers (8th grade)
- ▶ Pre-AICE Cambridge Environmental Science\*

ALL OF OUR  
"ADVANCED"  
COURSEWORK IS,  
OR WILL BECOME:  
CAMBRIDGE

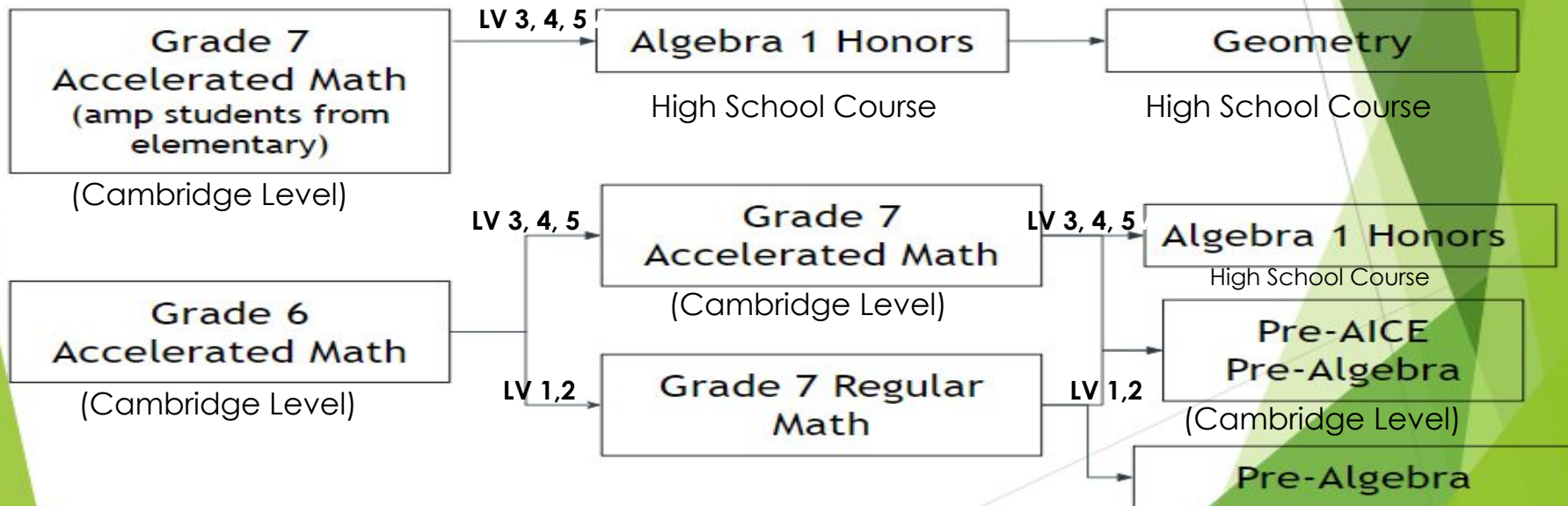
\*denotes a high school credit course

# Accelerated Math Pathways

Grade 6

Grade 7

Grade 8



# English Language Arts Pathway



Cambridge Assessment  
International Education

Grade 6

Grade 7

Grade 8

Pre-AICE ELA 6  
Levels 3, 4,5 or  
teacher  
recommendation

Pre-AICE ELA 7  
Levels 3, 4,5 or  
teacher  
recommendation

Pre-AICE ELA 8  
Levels 3, 4,5 or  
teacher  
recommendation

Regular ELA 6  
Levels 1,2  
may be in  
conjunction with  
Intensive Reading  
Elective

Regular ELA 7  
Levels 1,2  
may be in  
conjunction with  
Intensive Reading  
Elective

Regular ELA 8  
Levels 1,2  
may be in  
conjunction with  
Intensive Reading  
Elective

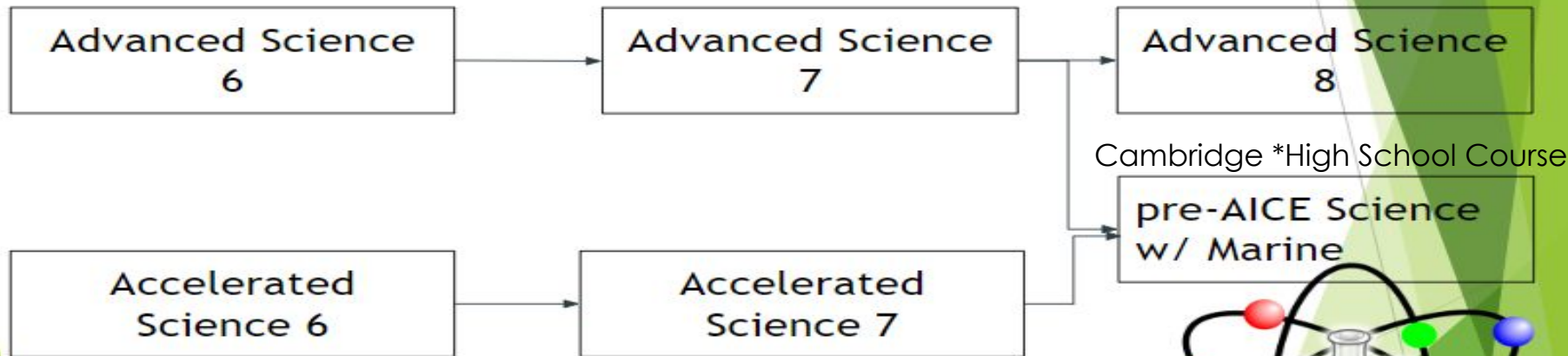
# Science Pathway



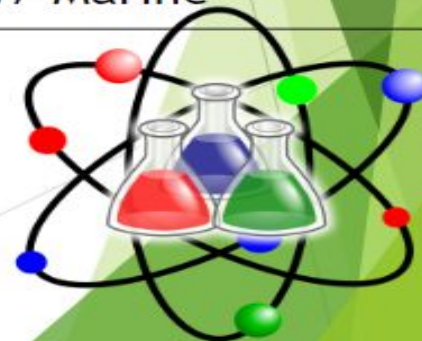
Grade 6

Grade 7

Grade 8



\*\*These two courses combine 6th, 7th AND 8th grade science concepts in TWO years so that they can take a high school course in 8th grade.



# Social Studies Pathway



Cambridge Assessment  
International Education

Grade 6

Advanced U.S.  
History

Grade 7

Advanced Civics  
• Students will  
take an EOC

Grade 8

Advanced World  
History

Holocaust Studies\*



# Elective Course Selection Google Form

## 6th Grade Course Selection Form

**Howard.rudnick@palmbeac  
hschools.org**

## Welcome to Boca Middle! Course Selection Sheet SY26 for Incoming 6th Graders

Elective selections for SY26

howard.rudnick@palmbeachschools.org [Switch account](#)



\* Indicates required question

Email \*

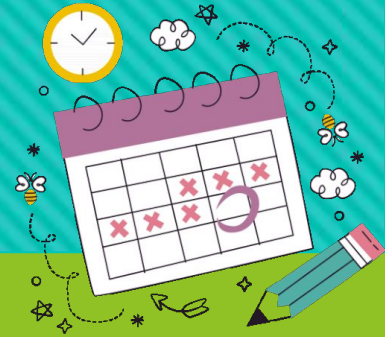
Your email

Please read the form in its entirety. If you have any questions please email your grade level guidance counselor (howard.rudnick@palmbeachschools.org). All incoming 6th grade students will be enrolled in Physical Education.

\*\* These courses require a completed application. DO NOT sign up for the course if you do not complete an application. The application is due on the same date as the course request form.

Application for Student Government: <https://forms.gle/8Zr81DSWJ4MXa65M7>

# Important to Know



- Do I need to register? Summer registration M-Th 8am-3pm
  - FEEDER SCHOOLS - NO
  - CHOICE STUDENTS (out of boundary) - YES
    - Late application (deadline 4/17)
  - CONTROLLED OPEN ENROLLMENT STUDENTS (deadline 5/30) - YES
  - FES SCHOLARSHIP STUDENTS/ESE - YES
- Supplies??
  - 6 different teachers means no Pre-Supply list. Instead: Have the basics: 4 notebooks; 4 binders; pen/pencil case/ earbuds (that are WIRED)
  - First week of school, teachers will tell you the rest
- GET ON Gateway: SIS sign up
- READ your Email: newsletter, call outs, emails, texts



# Important to Know starting in AUGUST



- **TRANSPORTATION** - In Mid June/July
  - Student registration on-line: sign in to student portal and click on “Register my ride” tile
  - Must use ID/address must be correct
  - **Controlled open enrollment** students may **not** ride any bus (even if one is close to them)
    - Must be driven to school

# Important to Know

- **Going to 7th grade? SHOTS and PHYSICAL REQUIRED BY FIRST DAY - or no schedule**
- **Pre-school /schedule pick-up days:**
  - incoming 7th graders -Thurs. August 7th 1:00-4:00
  - incoming 8th graders -Fri. August 8th 1:00-4:00
  - incoming 6th graders -Sat. August 9th 9:00am-12:00



**FIRST DAY OF SCHOOL -  
MONDAY, AUGUST 11**

BRCMS 2025-26  
Beginning of Year  
Important Dates



Monday, August 11, 2024 - First Day for Students

\*August 4, 2024 - First Day for Teachers 8:00am

**CLASS**  
schedule

Pre-School Schedule Pick-up /  
Computer Pick-up days



- **Thurs. August 7th 1:00-4:00pm** - 7th grade pick up
- **Fri. August 8th 1:00-4:00pm** - 8th grade pick up
  - *August 8th 10:00am-11am* New parent welcome/meet the teacher for IND and ASD programs
- **(Sat.) August 9th 9:00am-12:00pm** - 6th grade new Cobra student orientation, schedule pick up, ID's, and 'walk your schedule' tours

*Purchase or PICK UP your School TShirts from  
PTSA on these dates: Pre Order Here:*

<https://brcms.givebacks.com/>



FALL Open House/Meet the Teacher

- **Thurs., August 28th 5:30-8:00pm** - Open House "meet the teacher" - spend 10 min periods w/each teacher



# Two important documents parents need:

**STUDENT CODE OF CONDUCT** - what are some infractions that will result in a referral, and a consequence

Student Code of Conduct

**PUPIL PROGRESSION POLICIES** - what are some important policies that parents need to understand (attendance, 9-weeks exams, quality points, what happens when you get an “F” in a course in middle school

K-12 Student Pupil Progression Policy

# WE are committed to communicating!

Besides emails, call outs, and texts, we also send out a bi-weekly newsletter (principal made!) that updates parents on “ALL” that is Boca Raton Middle!

## BRCMS COBRA CORNER

Bi-weekly Parent Communication - April 15th, 2025

### ATTENDANCE MATTERS - UNTIL THE END

#### It's CRUNCH Time!

Attendance is mandatory and so very important until the end of the year. **No early vacation absences will be approved, and if students do not complete their classes until the end of year it may preclude them from matriculating to the next grade level.** \*\*Reminder, if you were absent, excused or unexcused, for 5 or more days in the 4th quarter, you will need to take your course's 9-weeks exam and pass with a 60% or more in order to pass the class.



*\*\*Early pick up due to Appointment? This will count as a 'absence' in the classes missed. Please try to make appointments before 9:30am to **not disrupt instruction**. No students will be allowed to leave "early" after 3:00pm; thus make appointments before 3:00pm if needed.\*\**

*\*\*Dropping off a forgotten item? Only lunches brought by a parent/guardian will be accepted. online/vendor food deliveries are not allowed to be given to students.\*\**

**WE ARE READY! WE BELIEVE IN YOU!** Administration has made "**Pop up Affirmations**" in hallways between classes, where students can get some kudos for all of their hard work. We want them to

THANK YOU!

Please stay behind for  
the Pre-Med  
presentation.

The background features a stylized mountain range in shades of green at the top and bottom. A central horizontal band is filled with a gradient from orange to yellow, with a rough, torn-paper-like edge separating it from the green sections.

# Choice Programs & Academy Logistics

# Academy Requirements:

- There are no eligibility criteria to *apply* for the Pre-Medical Academy.
- However...
  - Students must meet the academic, attendance, and behavior criteria (from the contract) to remain in the program.
  - No need to reapply each year; students meeting contract criteria are **automatically** enrolled in PreMed for 7th and 8th grades.

# Paperwork

1. Choice Contract and PE waiver forms - reviewed & signed by both student and parent
2. Students from outside the BRCMS zone must complete a Registration Packet with proof of address
3. \*\*\*7th graders: physical and immunization forms BEFORE school starts



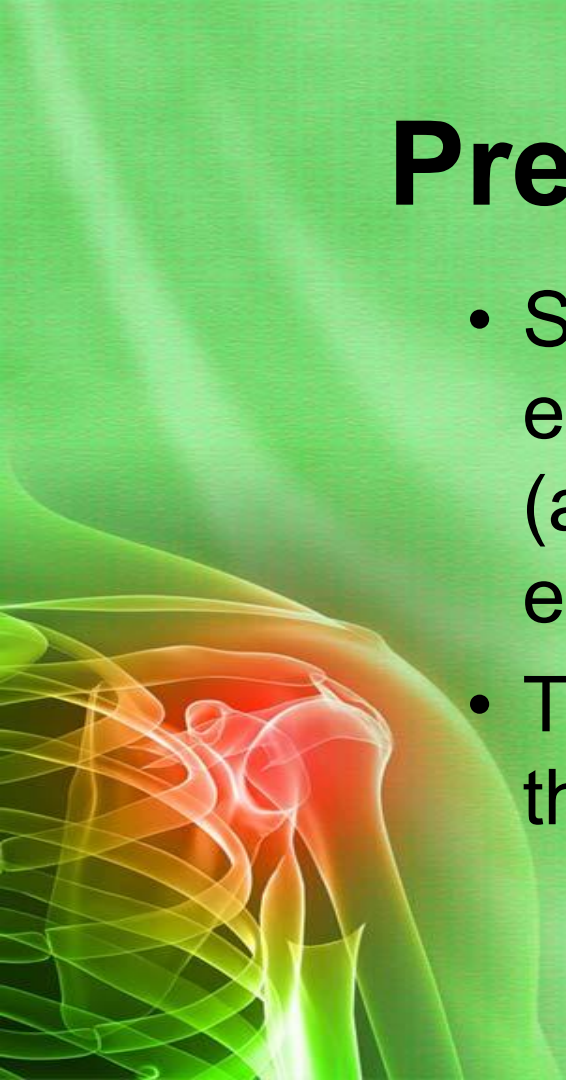
An anatomical illustration of a human torso, showing the ribcage and spine. A specific joint, likely the shoulder, is highlighted in a bright red color, indicating a point of focus or interest. The rest of the body is rendered in a translucent green color.

# **Boca Raton Community Middle School**

## **Pre-Medical Academy**

# Pre-Medical Academy

- Students take TWO science classes each year – a general science class (advanced or accelerated) AND an elective medical science class.
- The medical elective takes one of their two elective spots each year.





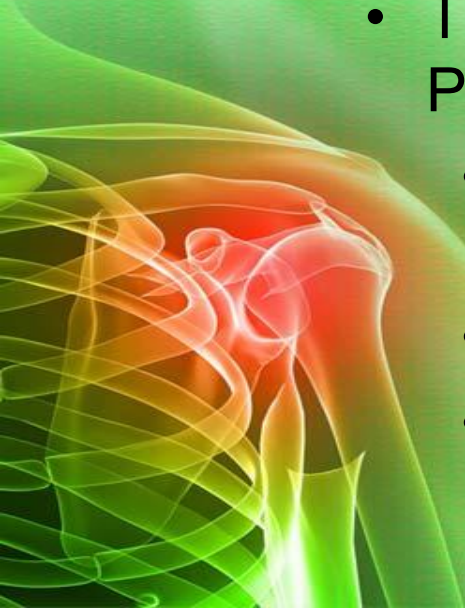
# Scrubs

- 10% of student's grade
- worn on Thursdays (all day)
- solid color shoes, limited jewelry, hair up, natural nails & make-up
- Purchase by the end of school this year to have before school starts in August



# Transition to Middle School

- Organization is KEY
  - Neat backpack w/ pencil pouch
  - homework folder
- Traditional Grading System  
Practice and Homework
  - Add 30-60 min. of structured homework time into your daily schedule.
  - Parents should monitor.
  - EVERY student will have homework in middle school, even if he/she rarely did in elementary school.



# Transportation



- In-sac students must live more than 2 miles from the school to get bus transportation.
- You **MUST** register for transportation in the district student **PORTAL**.
- The “Choice Transportation Zone” sometimes extends beyond the Boca Middle sac boundary - but;
  - Out-of-boundary students must provide their own transportation to the nearest bus stop within the Choice Transportation Zone or to the school itself.
  - **CONTROLLED OPEN ENROLLMENT/REASSIGNMENT STUDENTS** ARE NOT ALLOWED TO RIDE ANY BUS DUE TO BUS OVERCROWDING (no matter how close a stop is to the house)

# Q & A

You can email me at

[amy.finneran@palmbeachschools.org](mailto:amy.finneran@palmbeachschools.org)

I will send information via email over the summer and will have a summer Google Classroom for students who want to start preparing for our program.

THANK YOU! Questions?

Cobras, we can't wait  
to see you in August!